

# Stainless Steel 110HP & 120HP Series

CE MARKED

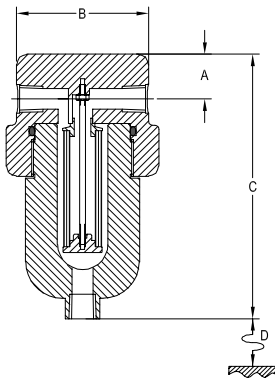
316L stainless steel construction  
 Designed to BS5500  
 Choice of 2 or 3 ports  
 Compact designs  
 Exotic materials available



112HP



122HP



Headline 110HP & 120HP series filter housings are constructed entirely from 316L stainless steel with Viton seals. They are free from welds and comply with NACE MR-01-75.

Specify 110HP & 120HP series housings for all 1/8" and 1/4" line size applications between 340 bar and 700 bar or when the application temperature reduces the pressure rating of the standard 110 & 120 series housing below that required.

These housings are also available with a PTFE seal, which requires a modified sealing design, simply add an S to the housing code, e.g. 122HPS. PTFE seals cannot be retrofitted into standard housings originally having viton seals. High temperature gaskets can only be fitted into S version housings.

## Principal Specifications

Housing Model	110HP	112HP	114HP	116HP	120HP	122HP	124HP	126HP
Port Size - NPT	1/8"	1/4"	1/8"	1/4"	1/8"	1/4"	1/8"	1/4"
Drain - NPT	1/8"	1/4"	None	None	1/8"	1/4"	None	None
Maximum Pressure - Bar (1)	700	700	700	700	700	700	700	700
Maximum Temperature - °C (2)	200	200	200	200	200	200	200	200
<b>Materials of Construction (3)</b>								
Head, Bowl & Internals	316L	316L	316L	316L	316L	316L	316L	316L
Gaskets	Viton	Viton	Viton	Viton	Viton	Viton	Viton	Viton
<b>Principal Dimensions</b>								
A - mm	22	22	22	22	22	22	22	22
B - mm	65	65	65	65	65	65	65	65
C - mm	105	105	105	105	130	130	130	130
D - mm	40	40	40	40	65	65	65	65
Volume - cc	26	26	26	26	40	40	40	40
Weight - kg	2.2	2.2	2.2	2.2	2.5	2.5	2.5	2.5
<b>Accessories</b>								
Standard Gasket Set	GV110HP	GV110HP	GV110HP	GV110HP	GV110HP	GV110HP	GV110HP	GV110HP
High Temperature Gasket (for S-type housings only)	GH110HP	GH110HP	GH110HP	GH110HP	GH110HP	GH110HP	GH110HP	GH110HP
Support Core	SC110	SC110	SC110	SC110	SC120	SC120	SC120	SC120
Mounting Bracket	MB130	MB130	MB130	MB130	MB130	MB130	MB130	MB130
<b>Filter Element Codes (4)</b>								
Disposable Element	12-32-xx	12-32-xx	12-32-xx	12-32-xx	12-57-xx	12-57-xx	12-57-xx	12-57-xx
Stainless Steel Element	SS-12-32-xx	SS-12-32-xx	SS-12-32-xx	SS-12-32-xx	SS-12-57-xx	SS-12-57-xx	SS-12-57-xx	SS-12-57-xx
PTFE Element	PT-12-32-xx	PT-12-32-xx	PT-12-32-xx	PT-12-32-xx	PT-12-57-xx	PT-12-57-xx	PT-12-32-xx	PT-12-57-xx

- Notes (1) Above 200°C the pressure rating is reduced, consult Headline for the exact rating at any specific temperature  
 (2) Maximum temperature 200°C using standard seals. For temperatures up to 500°C use a high temperature gasket  
 (3) Material abbreviations, 316L = 316L Stainless steel, PTFE = Polytetrafluoroethene  
 (4) Replace 'xx' with grade required, e.g. 12-32-50C, SS-12-32-25, PT-12-32-03