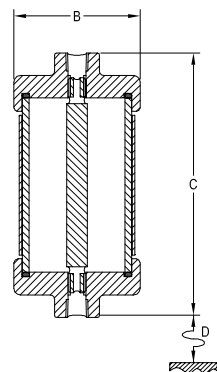
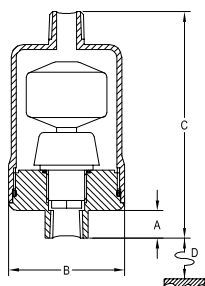


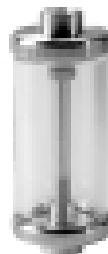
# Drain Vessels & Float Drains

FD130 Float Drain automatically removes liquids from the filter

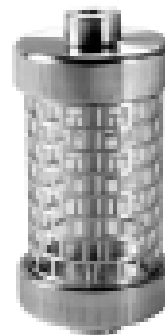
Drain Vessels are used to manually drain liquids from filters under negative pressure



FD130



DV127G



DV137G

The FD130 automatic float drain is used in positive pressure systems to remove large quantities of liquid. The drain is added to the drain port of a filter housing fitted with a coalescing filter element. The liquid drains from the housing into the automatic float drain and collects in the bottom. As the level of the liquid rises, the float will open a valve, and the liquid drains out. The FD130 automatic float drain is suitable for use in systems with a positive pressure between 1 bar and 15 bar.

For applications under a negative pressure, drain vessels can be used to collect large quantities of liquid. Valves installed at each end of the drain vessel will allow liquid to be isolated from the system and drained.

## Principal Specifications

Housing Model	DV127G	DV137G	DV147G	FD130
Port Size - NPT	1/8"	1/4"	1/4"	1/4"
Maximum Pressure - Bar	7	7	7	15
Maximum Temperature - °C	100	100	100	100
<b>Materials of Construction (1)</b>				
Head, Base & Internals	316L	316L	316L	316L
Bowl	Pyrex	Pyrex	Pyrex	316L
Gaskets	Viton	Viton	Viton	Viton
<b>Principal Dimensions</b>				
A - mm	-	-	-	10
B - mm	40	56	56	46
C - mm	97	118	232	90
D - mm	70	90	204	50
Volume - cc	36	105	255	30
Weight - kg	0.2	0.6	0.8	0.34
<b>Accessories</b>				
Gasket Set	GV127	GV137	GV137	GVFD130

Notes (1) Material abbreviations, 316L = 316L Stainless steel, Pyrex = Borosilicate glass