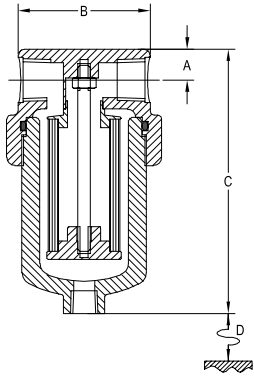


Stainless Steel 130/140 HP & VP Series CE MARKED

316L stainless steel construction
 Designed to BS5500
 Choice of 2 or 3 ports
 HP series to 200 bar
 VP series to 400 bar



Headline high pressure 130HP & 140HP series housings are specified for pressures above 100 bar, where 25-64-xx and 25-178-xx sized elements are required. For pressures between 200 and 400 bar 130VP and 140VP series housings should be specified.

Principal Specifications (Figures in brackets are for VP versions)

Housing Model	130HP	132HP	134HP	136HP	140HP	142HP	144HP	146HP
Port Size - NPT	1/4"	1/2"	1/4"	1/2"	1/4"	1/2"	1/4"	1/2"
Drain - NPT	1/4"	1/4"	None	None	1/4"	1/4"	None	None
Maximum Pressure - Bar (1)	200 (400)	200 (400)	200 (400)	200 (400)	200 (400)	200 (400)	200 (400)	200 (400)
Maximum Temperature - °C (2)	200	200	200	200	200	200	200	200
Materials of Construction (3)								
Head, Bowl & Internals	316L	316L	316L	316L	316L	316L	316L	316L
Gaskets	Viton	Viton	Viton	Viton	Viton	Viton	Viton	Viton
Principal Dimensions								
A - mm	15 (21)	15 (21)	15 (21)	15 (21)	15 (21)	15 (21)	15 (21)	15 (21)
B - mm	64 (85)	64 (85)	64 (85)	64 (85)	64 (85)	64 (85)	64 (85)	64 (85)
C - mm	129 (164)	129 (164)	129 (164)	129 (164)	243 (276)	243 (276)	243 (276)	243 (276)
D - mm	70 (75)	70 (75)	70 (75)	70 (75)	184 (190)	184 (190)	184 (190)	243 (276)
Volume - cc	115(160)	115(160)	115(160)	115(160)	300(320)	300(320)	300(320)	300(320)
Weight - kg	2.1(4.5)	2.1(4.5)	2.1(4.5)	2.1(4.5)	3.2(6.5)	3.2(6.5)	3.2(6.5)	3.2(6.5)
Accessories								
Standard Gasket Set	GV130HP (GV130VP)	GV130HP (GV130VP)	GV130HP (GV130VP)	GV130HP (GV130VP)	GV130HP (GV130VP)	GV130HP (GV130VP)	GV130HP (GV130VP)	GV130HP (GV130VP)
High Temperature Gasket (for S-type housings only)	GH130HP (GH130VP)	GH130HP (GH130VP)	GH130HP (GH130VP)	GH130HP (GH130VP)	GH130HP (GH130VP)	GH130HP (GH130VP)	GH130HP (GH130VP)	GH130HP (GH130VP)
Support Core	SC130	SC130	SC130	SC130	SC140	SC140	SC140	SC140
Mounting Bracket	MB130 (MB150)	MB130 (MB150)	MB130 (MB150)	MB130 (MB150)	MB130 (MB150)	MB130 (MB150)	MB130 (MB150)	MB130 (MB150)
Filter Element Codes (4)								
Disposable Element	25-64-xx	25-64-xx	25-64-xx	25-64-xx	25-178-xx	25-178-xx	25-178-xx	25-178-xx
Stainless Steel Element	SS-25-64-xx	SS-25-64-xx	SS-25-64-xx	SS-25-64-xx	SS-25-178-xx	SS-25-178-xx	SS-25-178-xx	SS-25-178-xx
PTFE Element	PT-25-64-xx	PT-25-64-xx	PT-25-64-xx	PT-25-64-xx	PT-25-178-xx	PT-25-178-xx	PT-25-178-xx	PT-25-178-xx

Notes (1) Above 200°C the pressure rating is reduced, consult Headline for the exact rating at any specific temperature
 (2) Maximum temperature 200°C using standard seals. For temperatures up to 500°C use a high temperature gasket
 (3) Material abbreviations, 316L = 316L Stainless steel, PTFE = Polytetrafluoroethene
 (4) Replace 'xx' with grade required, e.g. 25-64-50C, SS-25-64-25, PT-25-178-03